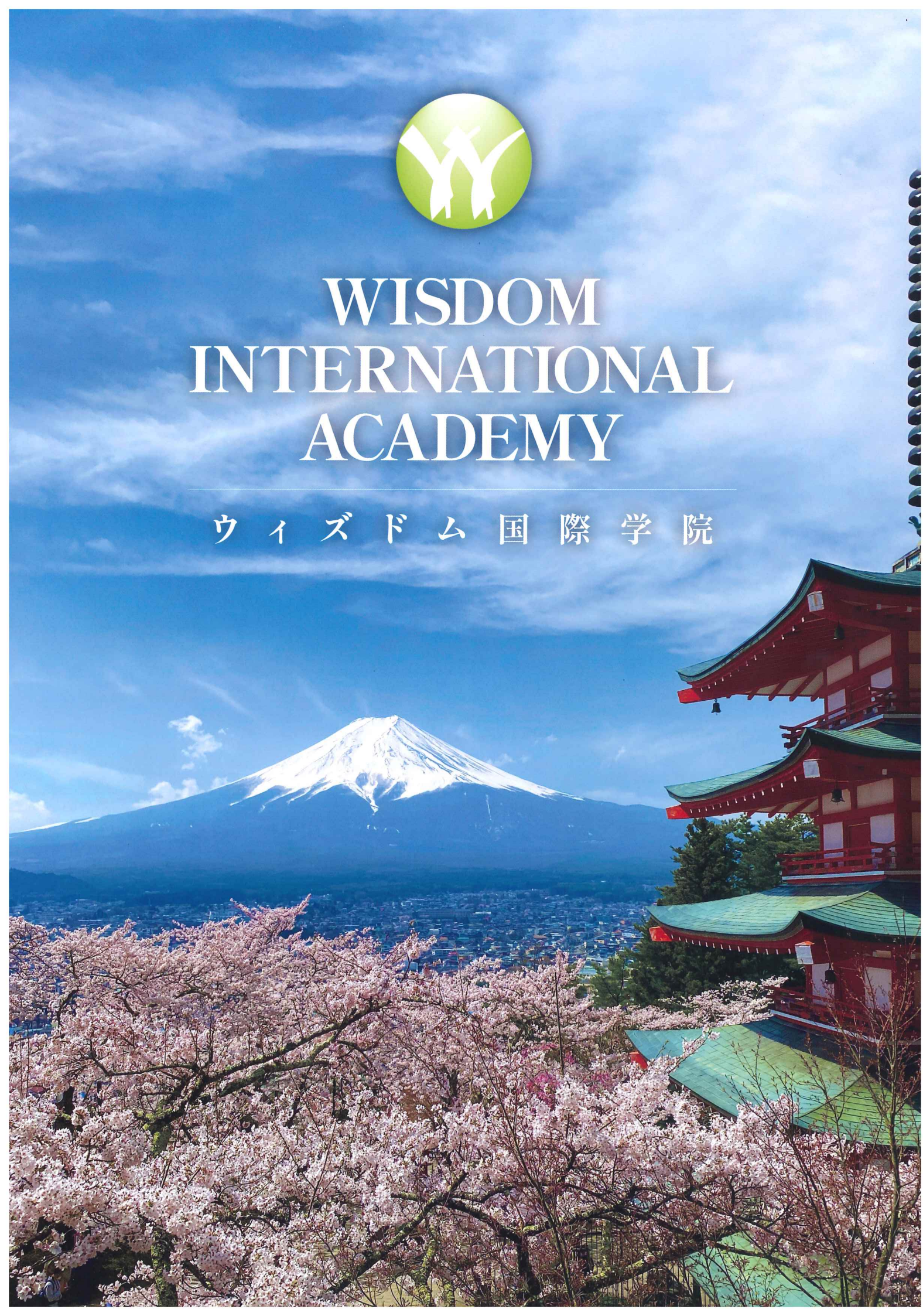




# WISDOM INTERNATIONAL ACADEMY

ウィズダム国際学院







Board Chairman/Principal

**Asahi Kokiso**



Welcome to Wisdom International Academy. Our school aims to nurture students with global perspectives and values. We welcome students from all over the world striving to master Japanese language skills. Our school plays a role as a platform for students to engage in great friendship, educational networking and energetic learning. We focus on fostering compassionate and inquisitive learners through Japanese language education. It is our mission to educate our students to become adaptable for fast-changing global affairs and to contribute to international relations and global communications.

## Education Philosophy

It is our education Philosophy to produce global leaders that can play important roles in many fields. We have three main ideas of school running.

1

**To train talents who can contribute to the improvement of friendship with countries around the world through international exchange and international understanding.**

2

**To cultivate Japanese language skills sufficient to adapt to education at universities and graduate schools.**

3

**To develop talented human resources who can play active roles in Japanese companies.**

## Education Policy

We promote education based on the following three educational policies.

1

**Small group lessons based on individuals' Japanese level**

We provide small-group education for students from beginner to advanced level of Japanese language to support their higher education.

2

**Fun school life with kind and thoughtful staffs**

We provide emotional support so that you can live every day without worry.

3

**Real Japanese Education**

Students can learn the natural Japanese language through study groups of various nationalities and cultural exchanges with the local community.

## Courses and Targets

### General Course

Students will learn practical Japanese language skills that are necessary for working, and also to pass the specific skill evaluation test in order to find employment in Japan.

Enrollment period: April

Level	JLPT*	CEFR*	Kanji	Period months	Main textbooks	Course Targets
Intermediate	N3-N2	B1	350	6	Minna no Nihongo Tyukyu I, Ryugakusei no tame no KANJI no kyokasyo Intermediate Level 700	Acquiring basic Japanese language skills that will be needed in the workplace.
Intermediate to advanced	N2-N1	B2	700	6	Minna no Nihongo Tyukyu II, Ryugakusei no tame no KANJI no kyokasyo Intermediate Level 700	Acquiring practical Japanese language skills that will be needed in the workplace and more specialized language skills in any field.

### Advanced Course

Students will learn academic Japanese, including test preparation, to enter a vocational school, university, or graduate school of their choice.

Enrollment period: 2-year course→April / 1.9-year course→July / 1.6-year course→October

Level	JLPT*	CEFR*	Kanji	Period months	Main textbooks	Course Targets	Course		
							2	1.9	1.6
Beginner I	N5	A1	150	3	Minna no Nihongo Syokyu I, Ryugakusei no tame no KANJI no kyokasyo Beginner Level 300	Acquiring the ability to read and write in Hiragana and Katakana and understand basic Japanese sentence patterns.	○		
Beginner II	N4	A2	450	3	Minna no Nihongo Syokyu II, Ryugakusei no tame no KANJI no kyokasyo Beginner Level 300/Intermediate Level 700	Acquiring vocabulary and Japanese sentence patterns that lead to the beginner and intermediate levels. Being able to engage in fundamental daily interactions.	○	○	
Intermediate	N3	B1	1000	6	Minna no Nihongo Tyukyu I, Ryugakusei no tame no KANJI no kyokasyo Intermediate Level 700	Understanding sentences about familiar society and culture. Being able to express opinions.	○	○	○
Intermediate to advanced	N2	B2	1500	6	Minna no Nihongo Tyukyu II, Ryugakusei no tame no KANJI no kyokasyo Advanced Level 1000	Understanding social topics such as news and newspapers. Being able to explain opinions more concretely and interact with others.	○	○	○
Advanced	N1	C1	2000	6	Cross National Boundaries, Ryugakusei no tame no KANJI no kyokasyo Advanced Level 1000	Acquiring Japanese language skills to cope with lectures at universities and graduate schools. Being able to talk with others and explain logically.	○	○	○

\*JLPT: Japanese Language Proficiency Test. Held annually in July and December.

\*CEFR: An international standard for describing language ability.

\*The teaching materials used may change depending on the situation.



## Yearly Schedule

<b>Apr.</b>	Entrance ceremony/Orientation (For who attends our academy in April)	<b>Oct.</b>	Entrance ceremony/Orientation (For who attends our academy in October)
<b>May</b>	Golden Week Future Guidance	<b>Nov.</b>	Examination for Japanese University Admission for International Students
<b>Jun.</b>	Examination for Japanese University Admission for International Students	<b>Dec.</b>	Examination for Japanese University Japanese Language Proficiency Test, Winter holidays
<b>Jul.</b>	Entrance ceremony/Orientation (For who attends our academy in July) Japanese Language Proficiency Test	<b>Jan.</b>	Lunar New Year Event
<b>Aug.</b>	Summer vacation	<b>Feb.</b>	Speech Contest
<b>Sep.</b>	Field trip	<b>Mar.</b>	Graduation ceremony Spring vacation

## Process from application to enrollment



Guidance



Calligraphy



Lunar new year



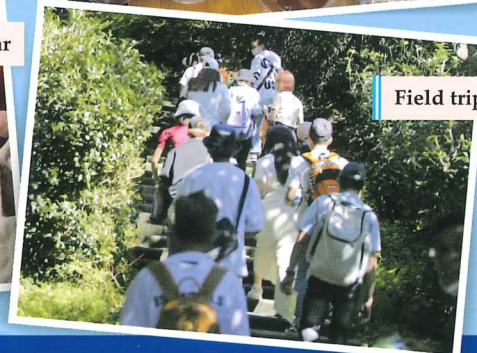
Lunar new year



Lunar new year



Field trip





## School Facilities

### Classroom



Bright and spacious air-conditioned classrooms.

### Teachers' Office



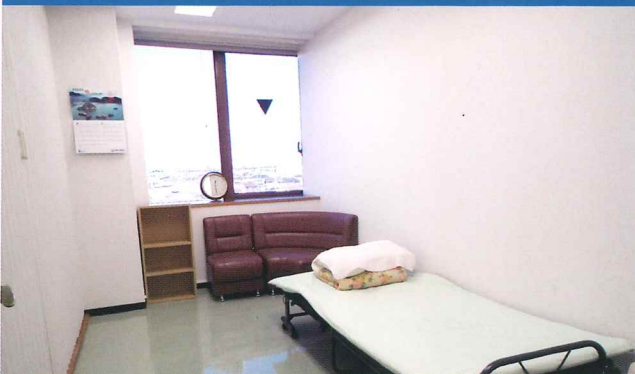
Kind teachers are always available. You can ask them questions anytime.

### Library



We provide a quiet study environment with books written in Hiragana, children's books, general books, literature, and books necessary for university entrance exams. You can also use computers freely.

### Nurses' Office



You can take a break in a quiet environment when you are not feeling well.

## Dormitory

There is a dormitory for students within walking distance of the campus. It is near the nearest station, and supermarkets and drugstores are nearby. The dormitory is equipped with electrical appliances so students can start living in Japan immediately.





## 4 Reliable Support

No.1

### We support effective Japanese language study.

Our experienced teachers teach Japanese from the basics. Students are assigned to each homeroom teacher to ensure they have the needed attention.

No.2

### We support a safe and comfortable study abroad experience.

Staff members are available to help students with any concerns or problems they may have daily or if they are ill or injured.

No.3

### We support students to have part-time jobs in a safe and secure place.

You can get a part-time job with easy access from your school in many areas. Older students are also working there, so you can work part-time comfortably.

No.4

### We support your academic choices after graduation.

We support students with guidance according to each student's study status so that students can pursue their desired academic paths and pass certification exams.

## Scholarships

### Wisdom's Perfect Attendance Award 12,000 yen

Students who were not absent or late for classes for a year.

### JASSO Honors Scholarship 30,000 yen/month (for 1 year)

Students who have achieved excellent grades in the previous year and are planning to attend university. (There will be selections by the academy.)

## Higher Education

Major past academic enrollments of higher education.

Yamagata University(Graduate school=GS), Toyama University(GS), Tsuru University(GS), Meiji University(GS), Teikyo University,Tokyo University of Information Sciences, Tokyo University of Social Welfare, Ashikaga University, Shumei University, Tokyo International Business College, Ohara Academy, GIA Niigata International Automobile College, Yomiuri Automobile College, Chiba Information and Accounting College, Chiba Mode Business Professional Training College, Chiba Nikken Institute of Technology etc.

\*Several higher education institutions accept designated school recommendations.

## Job Placement

Wisdom International Academy is a Registered Support Organization of specified skills. We will support you in writing documents after you get a job offer.



## Surroundings

Wisdom International Academy takes place in Chiba City, the political and cultural center part of Chiba Prefecture, next to Tokyo. Tokyo is less than an hour away, and Chiba City is only a 10-minute train ride, providing an excellent environment. In Chiba, they have festivals in summer and fall, and Wisdom International Academy participates in these festivals as part of its international exchange activities.



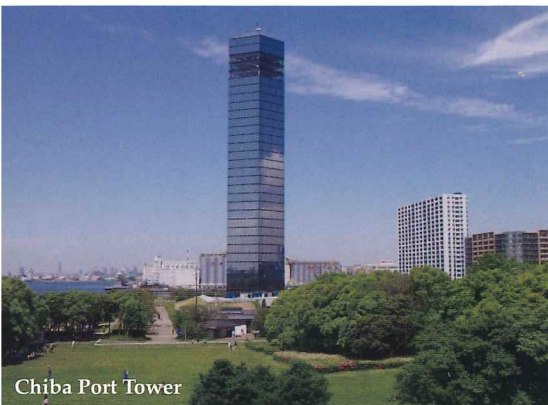
Chiba Park



Summer Festival



Inage Coast



Chiba Port Tower



Ario

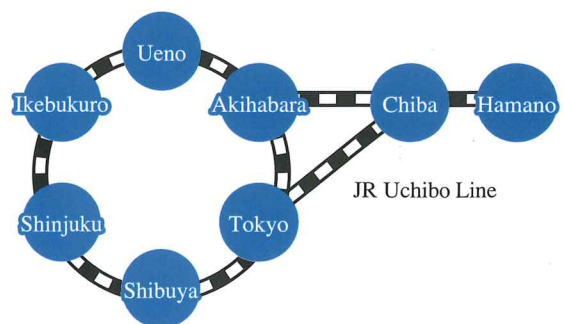
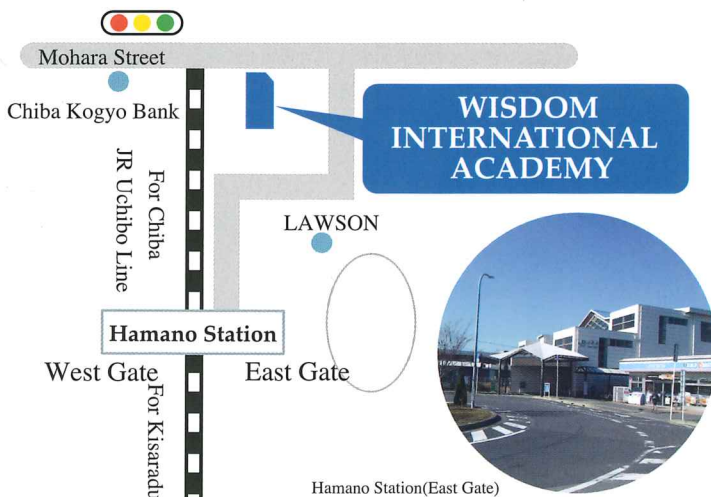


Fukuda Denki Arena

## Transportation

### 【 Directions from the nearest station to the academy 】

Get off at Hamano Station of JR Uchibo Line, go to the east gate, and walk for 3 minutes.



#### Access

Tokyo~Hamano (JR Uchibo Line Express 54 mins)

Akihabara~Hamano (JR Uchibo Line Express 53 mins)





Appearance of the campus

### Affiliated Schools



Tukuba Asia Welfare College



Kounosu International College

### Address

〒260-0824 724-3 Hamanocho, Tyuou-ku, Chiba City, Chiba, Japan

### Phone Number

043-290-9058

### FAX

043-290-9057

### e-Mail

office@wisdom-academy.jp

### WEB

wisdom-academy.jp